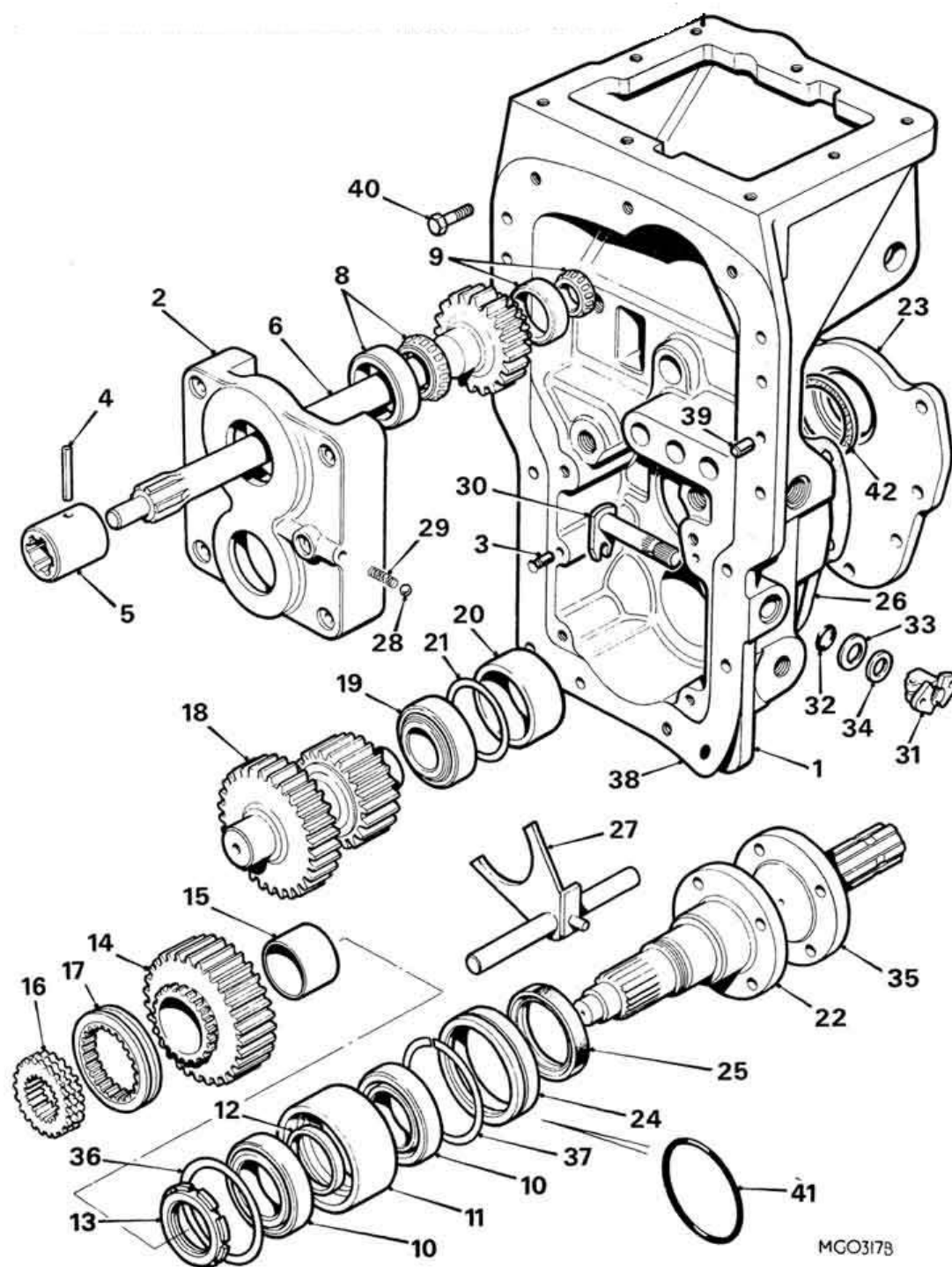


LEYLAND HYDRAULIC CASE AND P.T.O. SHAFT

(Leyland and Marshall heavyweight tractors with 2 speed power-take-off).



CTJ4028 Case	CTJ4029 Cover	BH608241 Bolt	AMK749 Dowel	RPS1630 Pin
CTJ3235 Coupling	CTJ4031 Shaft	37H8136 Bearing	GHB144 Bearing	AMK4825 Bearing
CTJ4036 Retainer	CTJ4037 Spacer	CTJ3257 Nut	CTJ3258 Gear-output	83H643 Bush-gear
CTJ4237 Coupler	CTJ4238 Coupling	CTJ3239 Gear-cluster	GHB137 Bearing	CTJ3242 Spacer
CTJ3243 Shim	CTJ3244 Shim	CTJ3245 Shim	CTJ4042 Shaft-pto	

These parts are in stock and available from [J Charnley & Sons](#).